



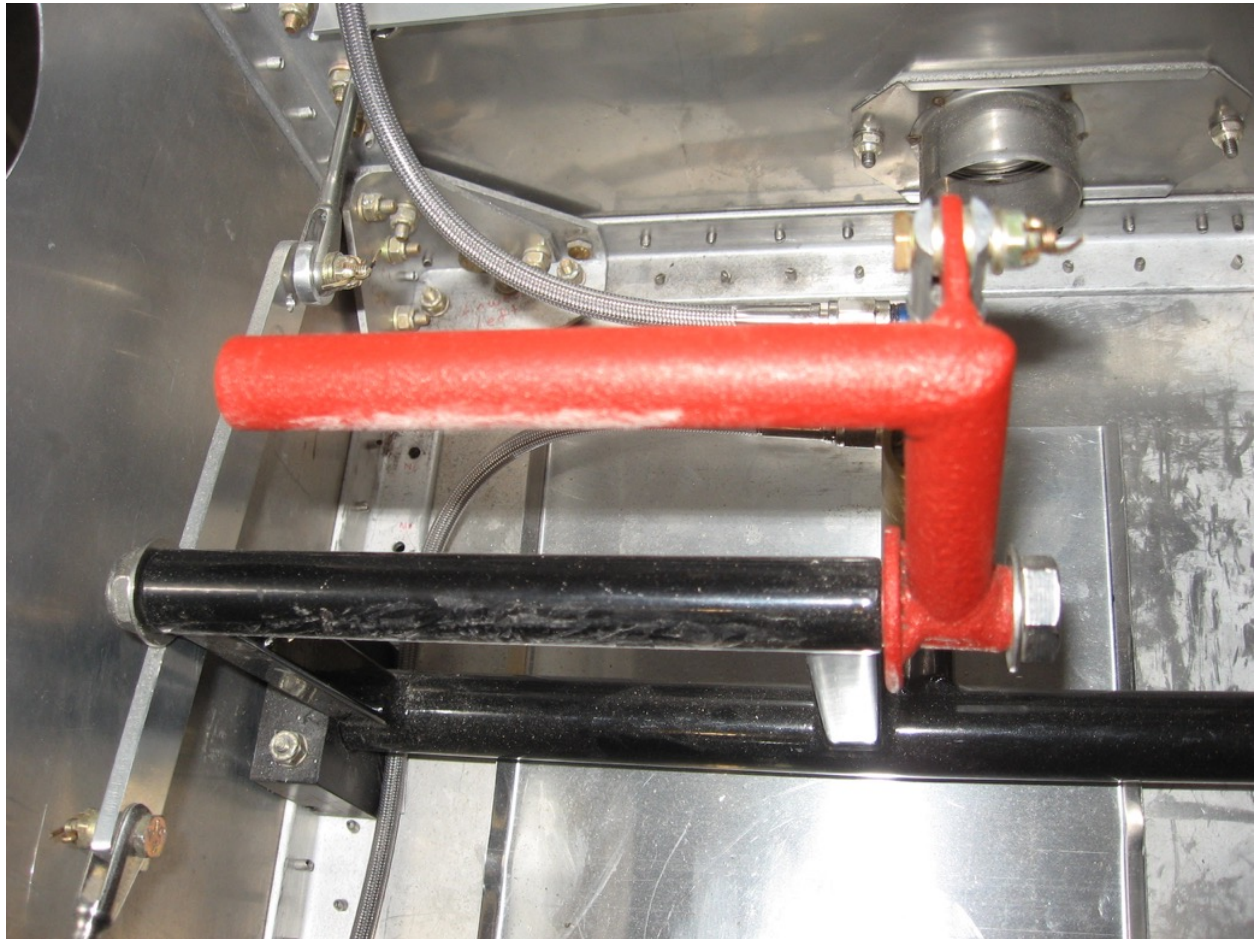
## Differential Toe Brakes

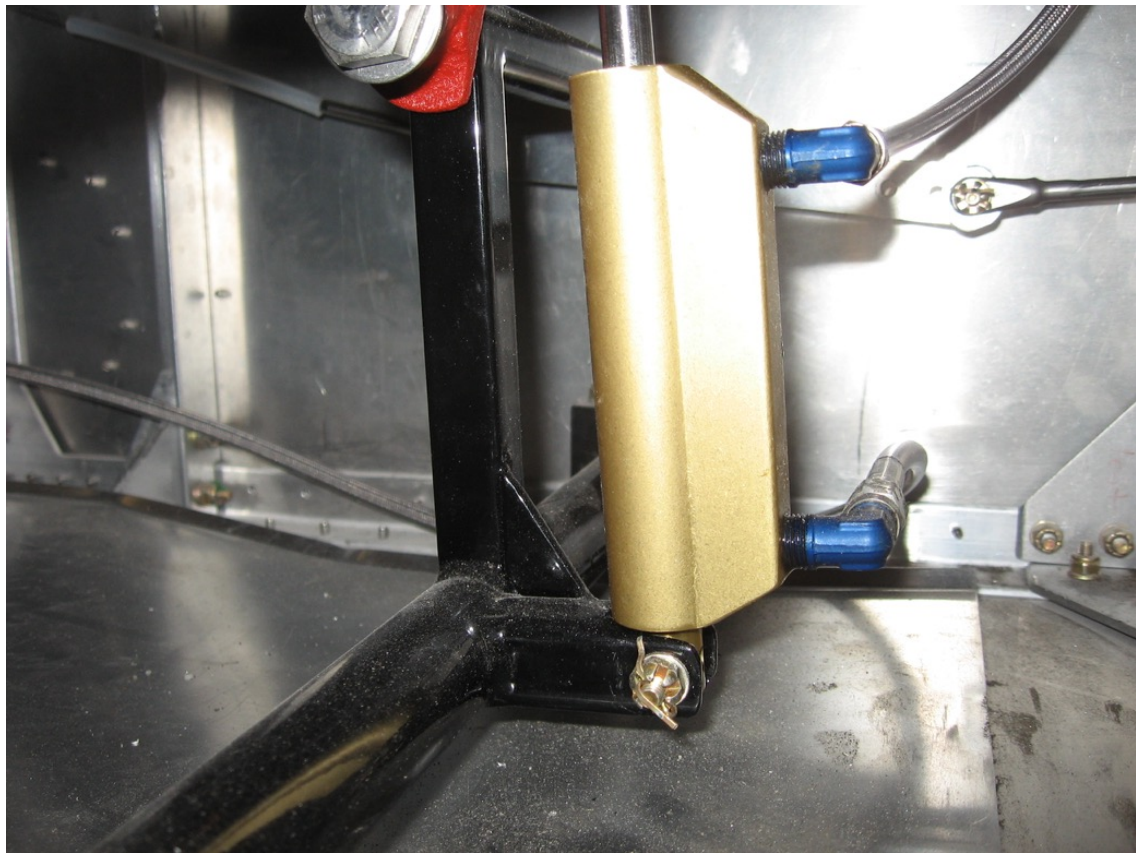
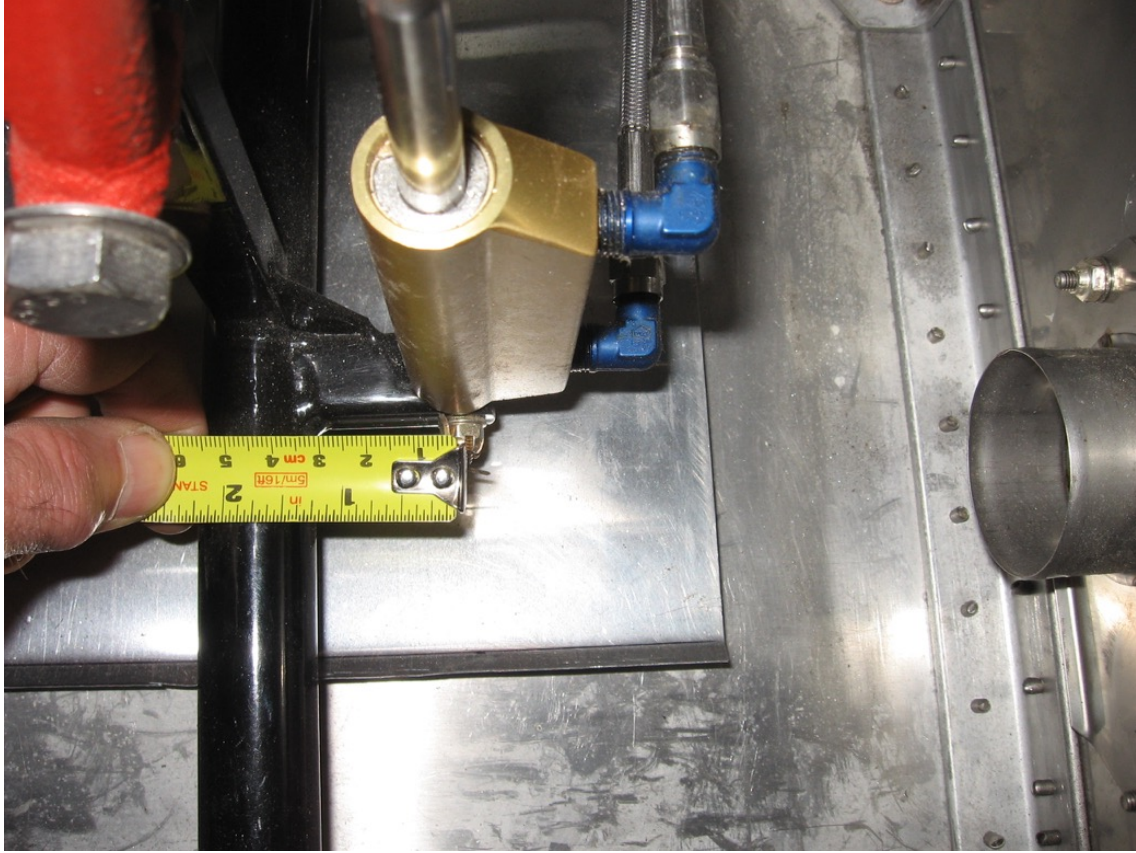
Written by Mike Turrell, Aircraft XXXX  
November 1st, 2015

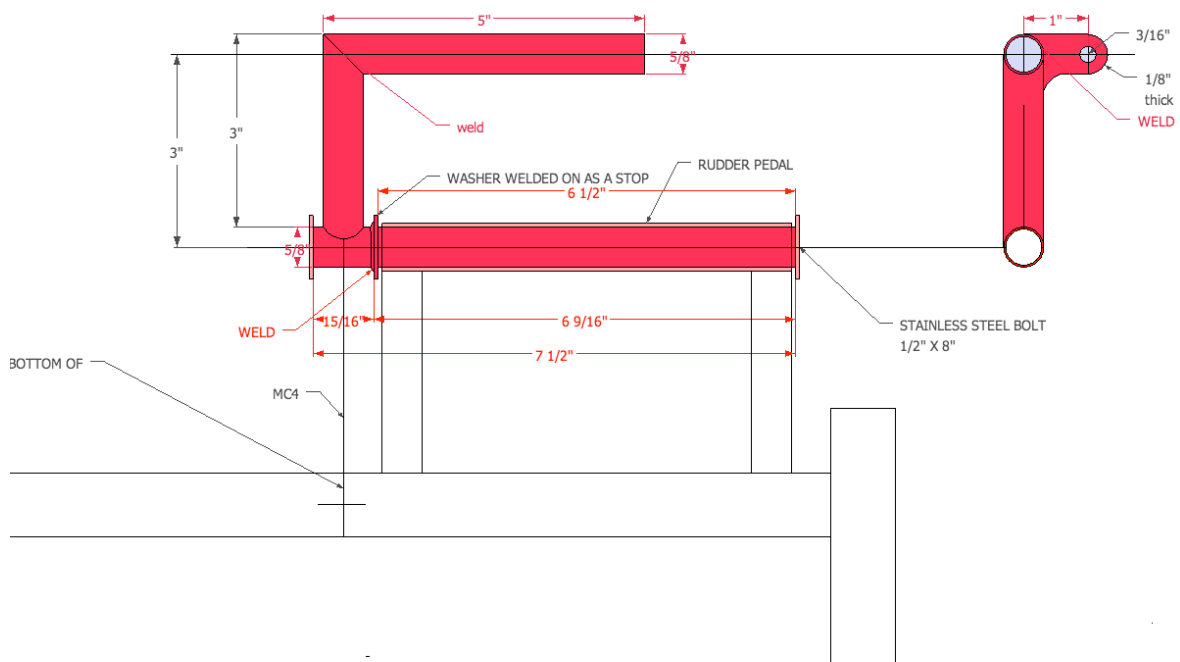
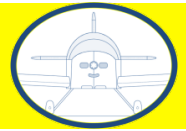
*Mike submitted the following in response to a discussion on the SonexBuilders.net forum about differential toe brakes. The Sonex Builders and Pilots Foundation neither endorses such modifications nor encourages builders to make them.*

Brake cylinders are Matco MC-4's Matco will also supply brake lines and fittings or you can go the stainless route like I did from <http://aircraftspecialty.com> Steve will have the lengths he sold me on file.

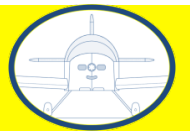
The Brake pedal should not be in line with the rudder pedal but rather angled back about 15 degrees or what seems comfortable. As can be seen in the last pic the bracket to capture the bottom of the cylinder is welded to the lower tube of the rudder pedals and is centered 1 1/4" from the edge.







If anyone has any questions I can be reached at [mtjit@start.ca](mailto:mtjit@start.ca) or through my web site [onexmike.org](http://onexmike.org)





Tool Review - Continued